

NORDELETRONICA NE209 ALARM

The NE209 Alarm features an internal PIR and an automatic position sensor, to provide alarm protection for your caravan. The system is controlled via supplied key fobs, and offers indication of arming, disarming and sounding of the alarm through the caravans road lights. An internal back up battery is fitted to allow continued alarm operation should the leisure battery be depleted or temporarily disconnected.

The instructions below are a guide to the basic functions of the alarm. The instructions refer to a basic alarm installation, i.e. with only one internal sensor (PIR) connected, and with factory settings. Please see the full instructions supplied with the alarm for a complete guide to connecting additional sensors, adding further or replacement key fobs, understanding error messages etc.

To arm the alarm



Press the LOCK button on the key fob

The external road lights will flash and the alarm will beep to confirm the action

To disarm the alarm



Press the UNLOCK button on the key fob

The external road lights will flash and the alarm will beep to confirm the action

To partially arm the alarm



Press the LOCK button on the keyfob.

Within 30 seconds of pressing the LOCK button on the key fob, press the NO PIR button on the internal PIR sensor (Front corner of bed box).

The external road lights will flash and the alarm will beep.

The alarm will now not sound if there is movement within the caravan, but will sound if the caravan itself is moved.

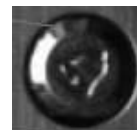
Press the PERIMETER button on the keyfob.



The external road lights will flash and the alarm will beep to confirm the action.

This offers the same protection as the NO PIR button – Movement within the caravan will not sound the alarm, but movement of the caravan itself will sound the alarm.

To sound the alarm in an emergency



Pressing the PANIC button on the key fob will immediately sound the alarm.

Press the UNLOCK button on the key fob to cancel the alarm.

Notes: If there is a problem when trying to arm the alarm, the LED on the internal sensor will flash. The number of flashes will give an indication of the problem, please see the full instructions for details.

If the alarm has sounded whilst the caravan has been un-attended, when the alarm is dis-armed the LED on the internal sensor will again flash to indicate the cause of the alarm.

For assistance, please call Nordelettronica Europe, 0845 8624545

The Nord alarm, via the LED on the PIR, is able to inform the user of the reason for the activation. The LED will flash in a sequence, which will be repeated 20 times, when the alarm is disarmed. The following list shows the causes of alarm activation, and the number of LED flashes for each.

LED Flashes	Cause
1	PIR 1
2	PIR 2
3	TILT SENSOR
4	CIRCUIT OPEN ON TAMPER 1
5	CIRCUIT OPEN ON TAMPER 2
6	PANIC PUSH BUTTON
7	EXTERNAL ALARM JP19
8	SABOTAGE ON PIR 1
9	SABOTAGE ON PIR 2